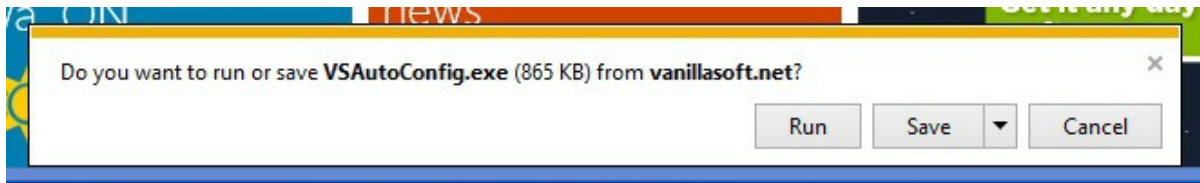
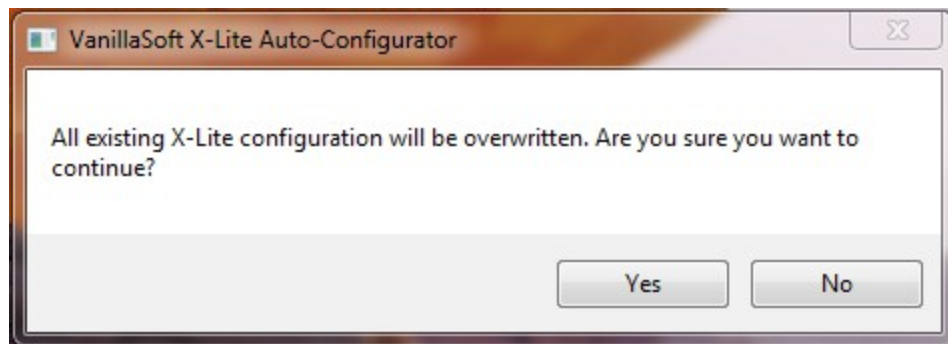


Please note: Initial phone setup **must** be completed using Internet Explorer – after the phone has been setup, you may use another browser of your choosing if you so wish.

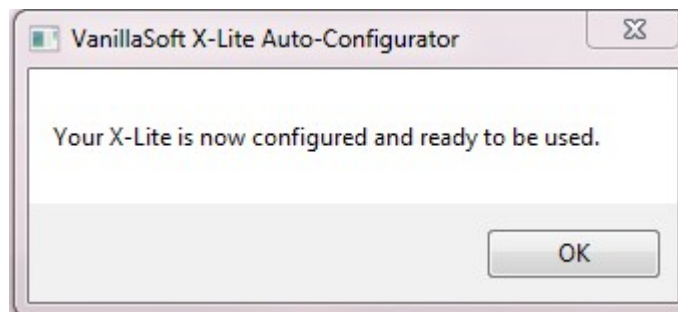
1. Download the latest copy of X-Lite from the [following website](#). Click where it says “To Begin your Download, click here”.
2. Install X-lite using the default options.
3. Click on the [following link](#) to run the X-Lite auto-configuration tool. You will see a prompt at the bottom of your browser asking you to run or save the file. Click “Run”.



4. When you click “Run” you will then see the following prompt:



5. Click yes then X-lite will be launched and configured.
6. Please note: The configuration tool will need control of your mouse cursor while the configuration is taking place. Do **not** use your mouse until the following prompt appears:



If you encounter any errors please re-run the configuration tool. If this does not resolve the error, or after running the X-lite phone will not connect, please contact VanillaSoft support at 1-866-763-8826 extension 2. Support hours are 9:00AM until 8:00 PM Eastern Standard Time, Monday through Friday.